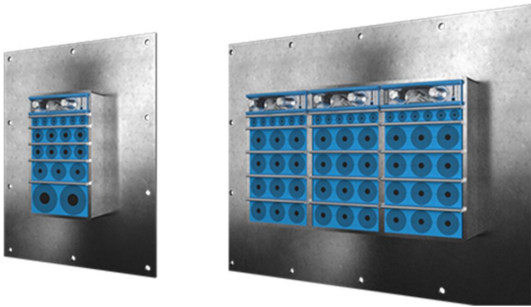




Roxtec GH FL100 transit

Transit with wide flange, for bolting onto uneven structures.

The Roxtec GH FL100 is a cable and pipe seal that allows for high packing density. The transit ensures a tight seal when bolted onto concrete or brick walls/floors. The rectangular steel frame has a 100mm wide flange to make it possible to place the bolting holes further from the opening in the wall to avoid the risk of cracks. The transit can be used with a GE extension frame in galvanized steel to cover the depth of a thick wall.



- Rodent resistant
- Area efficient
- Easy to maintain and inspect

Product characteristics



Fire rated



IP/UL NEMA

Structure of installation



Concrete



Brick

Mounting type



Bolting

Ratings & certificates

Fire

- E/EI rating according to EN 13501
- F/T rating according to UL 1479

Tightness

- IP 66/67

Frame dimensions

mm/kg

The frame variants below are a limited selection. For the full range of frames and configurations, please visit [roxtec.com](https://www.roxtec.com).

| Product | Frame openings | Packing space | External dimensions WxHxD | Aperture dimensions w x h | Weight | Art. no |
|----------------------|----------------|---------------|------------------------------|------------------------------|--------|---------|
| GH 6x1 FL100 GALV | 1 | 120 x 180 | 332.5 x 430 x 60 | 148(+5/-5) x 245(+5/-5) | 7.8 | 122158 |
| GH 6x2 FL100 GALV | 2 | 120 x 180 | 463 x 430 x 60 | 278(+5/-5) x 245(+5/-5) | 11 | 122159 |
| GH 6x3 FL100 GALV | 3 | 120 x 180 | 593.5 x 430 x 60 | 409(+5/-5) x 245(+5/-5) | 13.8 | 122160 |
| GH 6x1 FL100 AISI316 | 1 | 120 x 180 | 332.5 x 430 x 60 | 148(+5/-5) x 245(+5/-5) | 7.4 | 105508 |
| GH 6x2 FL100 AISI316 | 2 | 120 x 180 | 463 x 430 x 60 | 278(+5/-5) x 245(+5/-5) | 10.5 | 120984 |
| GH 6x3 FL100 AISI316 | 3 | 120 x 180 | 593.5 x 430 x 60 | 409(+5/-5) x 245(+5/-5) | 13 | 105509 |

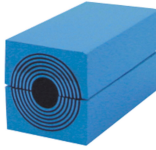


Sealing components

Sealing components



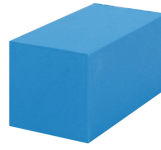
Lubricant



RM module with
Multidiameter™



Wedge & Wedgekit



RM solid compensation
module



Stayplate



GE extension frame



Holder tools



Sealing kit

Accessories

For detailed information, please visit [roxtec.com](https://www.roxtec.com).

The product information provided by Roxtec does not release the purchaser of the Roxtec system, or part thereof, from the obligation to independently determine the suitability of the products for the intended process, installation and/or use.

Roxtec gives no guarantee for the Roxtec system or any part thereof and assumes no liability for any loss or damage whatsoever, whether direct, indirect, consequential, loss of profit or otherwise, occurred or caused by the Roxtec systems or installations containing components not manufactured by an authorized manufacturer and/or occurred or caused by the use of the Roxtec system in a manner or for an application other than for which the Roxtec system was designed or intended.

Roxtec expressly excludes any implied warranties of merchantability and fitness for a particular purpose and all other express or implied representations and warranties provided by statute or common law. User determines suitability of the Roxtec system for intended use and assumes all risk and liability in connection therewith. In no event shall Roxtec be liable for indirect, consequential, punitive, special, exemplary or incidental damages or losses.

The Roxtec products are offered and sold in accordance with the conditions of the Roxtec General Terms of Sales. The latest version of the Roxtec General Terms of Sales can be downloaded from <https://www.roxtec.com/en/about-us/about-roxtec/general-terms-of-sales/>

We reserve the right to make changes to the product and technical information without further notice. Any errors in print or entry are no claims for indemnity. The content of this publication is the property of Roxtec International AB and is protected by copyright.

This document was generated on: 2024-04-27